



## LIGHT WEIGHT PARTITIONS

Fire Resistant & Sound Insulated



PAKISTAN INSULATIONS (Pvt) Ltd.

# PAKISTAN INSULATIONS PARTITIONS

Pakistan Insulations Pvt Ltd Drywall systems are most suited to meet performance criteria and bring a variety of construction and end user benefits to the sector you are designing for.

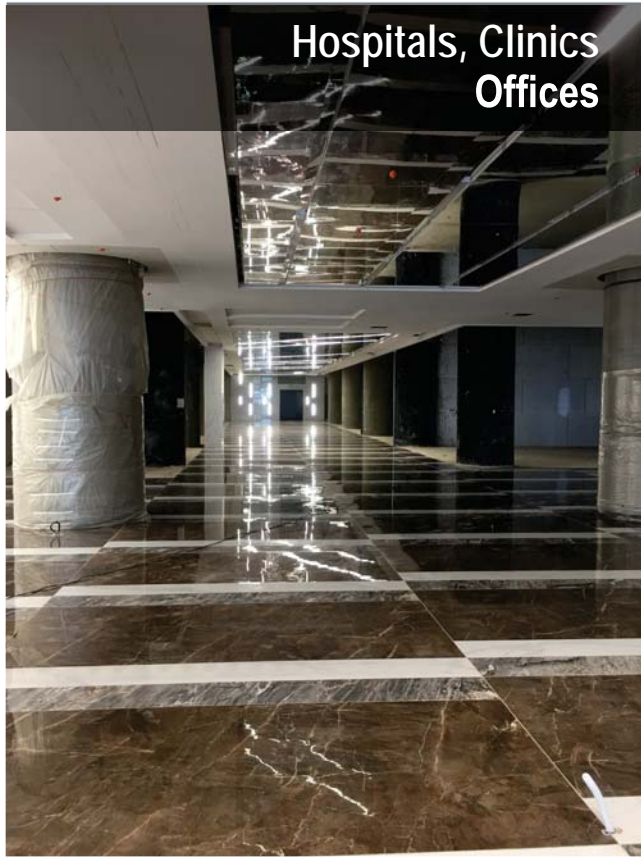


Schools, Universities,  
Training Facilities, Colleges





## Hospitals, Clinics Offices



### PARTITIONS

Pakistan Insulations Pvt Ltd offers a wide range of non-load bearing lightweight partition systems. These partition systems can be implemented in the design of many types

of buildings including residential housing, flats and apartments, commercial and industrial properties. These lightweight partition systems are designed to offer high performance to meet the most demanding fire resistance, sound insulation and height requirements.

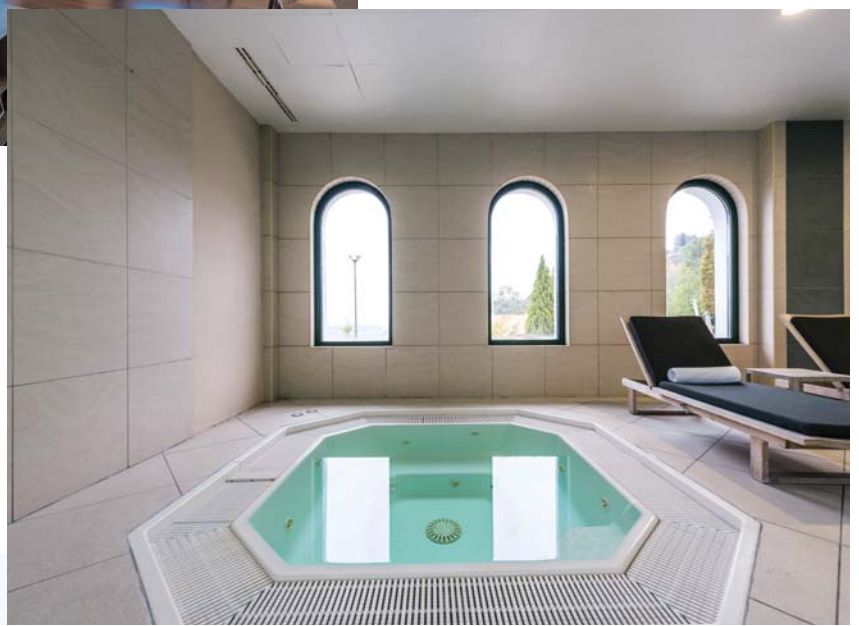
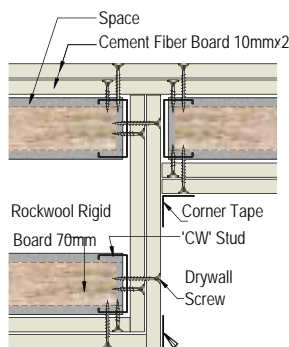
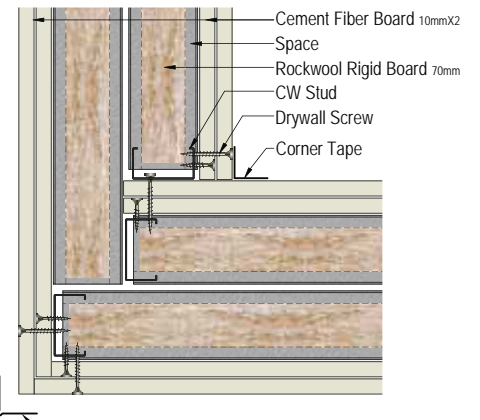
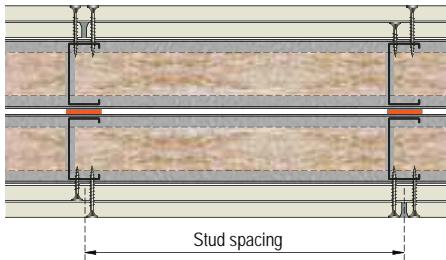
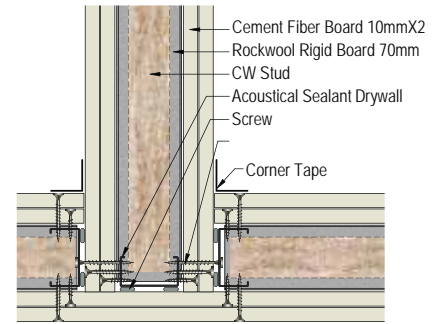
Offering quick and simple speed of installation constructed from high quality components, our partitions are guaranteed to perform. Our PARTITIONS provide satisfaction and reassurance in knowing that these components have been comprehensively tested together to ensure their performance, and that our support extends from concept to site.



## Cinemas, Theatres, Auditoriums







# Systems Overview

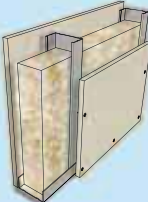


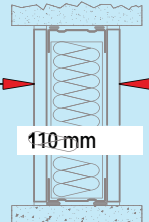
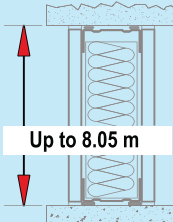
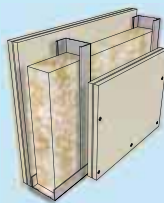


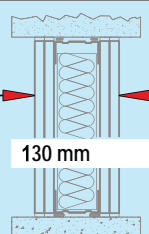
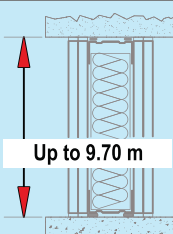
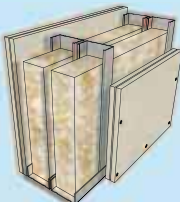


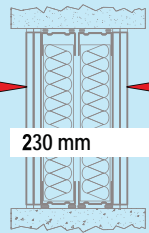
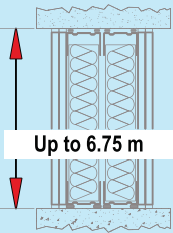
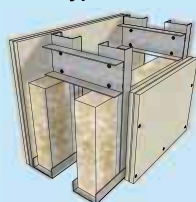


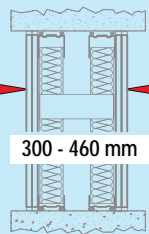
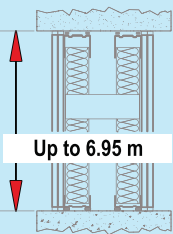
## SYSTEMS DESIGNED TO MEET BUILDING REQUIREMENTS

Pakistan Insulations Pvt Ltd offers systems for a large variety of building requirements.

- Fire protection
- Sound insulation
- High partitions
- Moisture Resistance
- Heavy duty walls
- Aesthetics

These systems are composed of Cement Fiber boards and metal framing, joint compounds and other materials such as joint tapes, seal ants, screws and insulation.

The products alone do not provide performance, the performance is given by the complete assembled system. System performance is achieved on following the correct installation details such as stud spacing and fixing centers, as well as using the nominated components such as cement fiber boards, compounds, studs and insulation. The smallest of details such as the sealing of penetrations can have a large effect on the overall system performance. Acoustic values given for the systems within this manual are based on Marshall Day prediction. Variations in construction or materials may reduce a system's fire and acoustic rating, structural capacity or other aspects of performance.

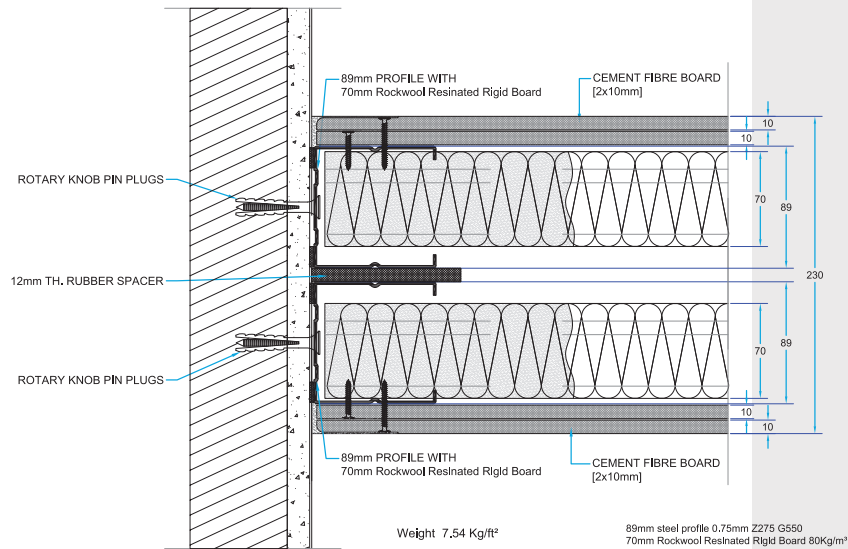
Systems	Performance	Fire resistance	Sound Reduction (RW)	Partition Width	Height
<b>Type C</b> 	<ul style="list-style-type: none"> <li>Economical solution</li> <li>Fast space division</li> </ul>	 <b>Up to 30 min.</b>	 <b>40 - 51 dB</b>	 <b>110 mm</b>	 <b>Up to 8.05 m</b>
<b>Type B</b> 	<ul style="list-style-type: none"> <li>Optimum solution</li> <li>Meets most design criteria</li> <li>Small footprint</li> <li>High fire resistance</li> </ul>	 <b>Up to 60 min.</b>	 <b>50 - 56 dB</b>	 <b>130 mm</b>	 <b>Up to 9.70 m</b>
<b>Type A</b> 	<ul style="list-style-type: none"> <li>High acoustic performances</li> <li>High fire resistance</li> <li>Optimum for separation walls</li> </ul>	 <b>Up to 120 min.</b>	 <b>58 - 63 dB</b>	 <b>230 mm</b>	 <b>Up to 6.75 m</b>
<b>Type A-1</b> 	<ul style="list-style-type: none"> <li>Very good acoustic performance</li> <li>Accommodates large service runs</li> <li>High fire resistance</li> <li>Adjustable footprint</li> </ul>	 <b>Up to 120 min.</b>	 <b>56 dB</b>	 <b>300 - 460 mm</b>	 <b>Up to 6.95 m</b>

Movenpick

Hilton

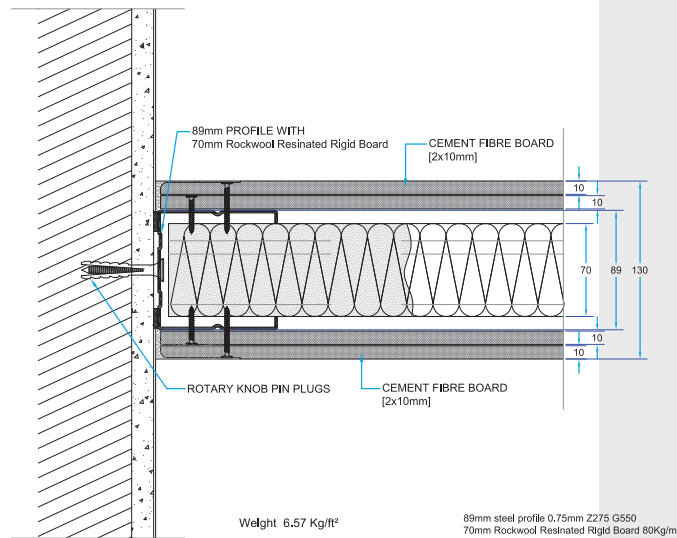
Hilton

### TYPE A DOUBLE WALL SYSTEM (230MM) WITH 120 MINUTES FIRE RATING

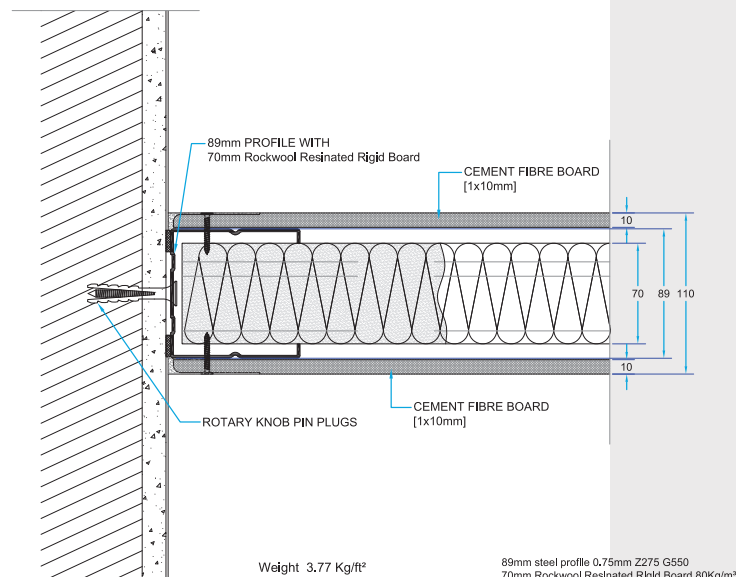


Movenpick

### TYPE B SINGLE WALL SYSTEM (130MM) WITH 60 MINUTES FIRE RATING



### TYPE C SINGLE WALL SYSTEM (110MM) WITH 30 MINUTES FIRE RATING





# Why choose Pakistan Insulations Rockwool Rigid Board?

STONE WOOL IS A VERSATILE NON-COMBUSTIBLE THERMAL INSULATION.

Pakistan Insulations Rockwool Rigid Board is the most versatile and commonly used thermal insulation material in many European countries.

Pakistan Insulations Rockwool Rigid Board uniquely combines excellent thermal and sound insulation properties with a highly fire retardant material. In addition to construction, stone wool is used in conditions that impose extremely demanding and versatile

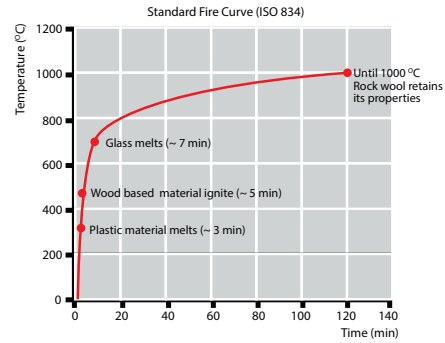


Figure 1: The behavior of certain construction materials in a "standard" fire. A "standard fire" simulates the development of temperature of a fire in normal room space.

---

## EXCELLENT FIRE RESISTANCE PROPERTIES IN CONSTRUCTIONS.

Pakistan Insulations Rockwool Rigid Board is made of stone and can therefore be used as thermal insulation in applications with highly demanding fire specifications. Almost all types of mineral wool are classified as non-combustible material, but Pakistan Insulations Rockwool Rigid Board has an exceptionally high melting temperature of around 1000 OC, providing longer protection. Therefore, rather than adding to the fire load, Pakistan Insulations Rockwool Rigid Board offers an effective fire resistant thermal insulation solution.

Because of its unique fire properties Pakistan Insulations Rockwool Rigid Board can be utilized as fire insulation and as structural protective cladding. In structures insulated with Pakistan Insulations Rockwool Rigid Board, the spreading of any fire is retarded or prevented altogether.

---

## LIFE-LONG INSULATION MATERIAL.

Pakistan Insulations Rockwool Rigid Board retains its thermal insulation properties for the entire life-time of a building. Pakistan Insulations Rockwool Rigid Board is a chemically robust material with a strong resistance to organic oils, solvents and alkalis.

---

## RETAIN ITS FORM.

Pakistan Insulations Rockwool Rigid Board does not expand or shrink, even as a result of dramatic changes in the temperature or humidity. Therefore no cracks will form at the joint of the slabs and there is consequently no risk of heat leakage or moisture condensation.





## ROCKWOOL RIGID BOARD



### PAKISTAN INSULATIONS(Pvt) Ltd.

107, Buiness Avenue, P.E.C.H.S. Block-6,  
Sharah-e-Faisal, Karachi. 75400 PAKISTAN.

Tel: 92-21-34529722, 34529722, 34532958

Fax: 92-21-34548686

E-mail: [info@pakinsulation.com](mailto:info@pakinsulation.com), Web Site: [www.rockwool.web.pk](http://www.rockwool.web.pk)

Factory: DSU15 Zulfiqarabad Karachi.